

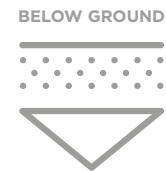


HDPE SPIRAL





HDPE SPIRAL



Corrugated spiral pp pipes - with metal reinforcements

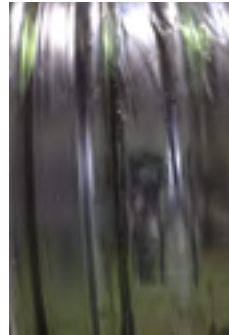
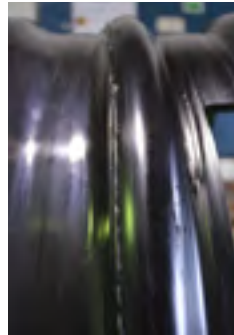
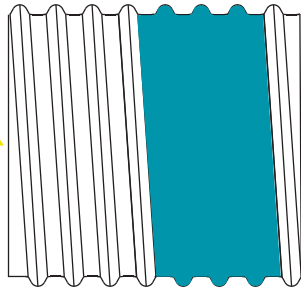
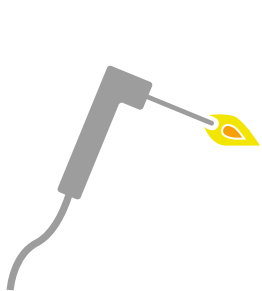
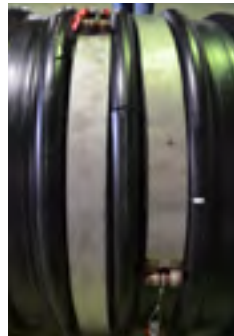
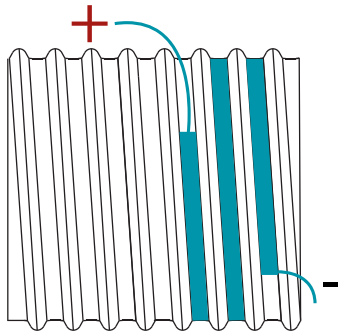
Spiral corrugated pipes are double-layer corrugated pipes made of high density polyethylene and consist of a smooth inner wall and the outer corrugated spiral wall. The pipe is manufactured by winding of profiled outer layer of high density polyethylene with a corrugated profile on the smooth inner layer which is extruded and welded continuously.

The outer layer consists of a profiled metal strip which is coated with polyethylene, and the inner layer consists of high density polyethylene. The presence of the profiled metal strips in the outer layer significantly improves the strength of the pipe itself. For this reason PEŠTAN spiral corrugated pipes are produced in strength class SN 8 or greater.

CROSS SECTION:
AVAILABLE DIAMETERS
FROM:
ID 700, 800, 1000, 1200,
1500, 1800.

PIPE LENGTH: 6 M ILI 12 M,
LENGTHS IN BETWEEN
ARE POSSIBLEBY SPECIAL
REQUEST.

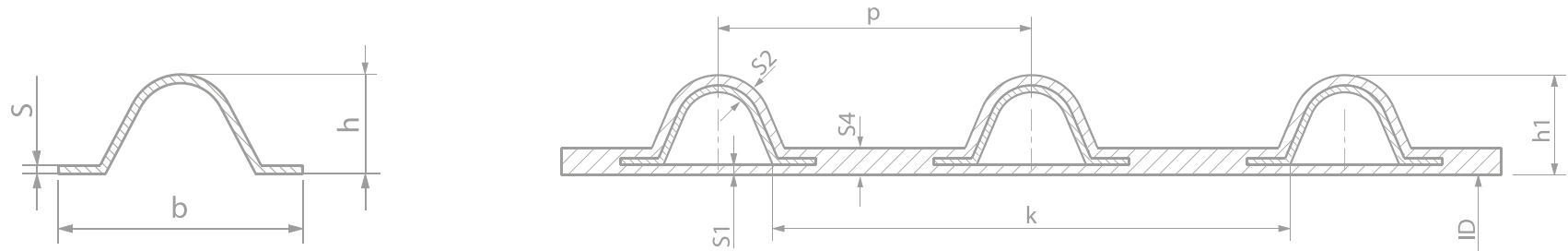
CONNECTION METHOD:
ELECTRO FUSION
RING - BELT AND
THERMOS-SHRINKING FOIL



NOTE: In both cases it is necessary additional welding by manual extruder. It's possible use of two methods of connecting, first set electrofusion belt and then through this set flexible neon wire, with a mandatory welding with manual extruder from the inside.

Pipes are not separable per joints.
PIPE BY ITS STRUCTURE IS INTENDED ONLY FOR
GRAVITY SEWERAGE

SPECIFICATION AND INFORMATIONS



PROFILE

ID	S	S1	H	H1	B	P	K	S2	S4
700	2,4	3,5	27,4	34,4	67,5	108	178	3,5	9,4
800	2,4	3,5	27,4	34,4	67,5	108	178	3,5	9,4
1000	2,4	4,5	47,4	58,5	111,5	170	269	6,6	13
1200	2,4	4,5	47,4	58,5	111,5	170	269	6,6	13
1500	2,8	5	57,8	68	129	188	290	5,2	13,5
1800	2,8	5	57,8	68	129	188	290	5,2	13,5

SN8 BLACK COLD-ROLLED SHEET

DN	ID (MM)	OD (MM)	SLOPE	THICKNESS OF STEEL (MM)	WIDTH OF STEEL STRIPS (MM)	THE THICKNESS OF THE INNER LAYER (MM)	WEIGHT OF HDPE MATERIAL (KG)	GLUE WEIGHT (KG)	STEEL WEIGHT (KG)	TOTAL WEIGHT
700	710	760	95	0,8/1,0	94	4,5	14,0	2,6	11,0	25,0
800	810	870	108	0,8/1,0	94	4,5	15,4	2,6	12,0	30,0
1000	1010	1090	124	1,0	158	4,5	21,2	3,8	20,0	45,0
1200	1210	1316	170	1,0/1,2	158	4,5	27,7	4,3	22,0	54,0
1500	1510	1636	180	1,2	186	4,5	46,4	5,6	40,0	92,0
1800	1810	1962	192,5	1,2/1,5	186	5,0	67,5	7,5	55,0	130,0

SN16 GALVANIZED SHEET

DN	ID (MM)	OD (MM)	SLOPE	THICKNESS OF STEEL (MM)	WIDTH OF STEEL STRIPS (MM)	THE THICKNESS OF THE INNER LAYER (MM)	WEIGHT OF HDPE MATERIAL (KG)	GLUE WEIGHT (KG)	STEEL WEIGHT (KG)	TOTAL WEIGHT
700	710	760	95	0,8/1,0	94	4,5	13,0	2,6	12,0	28,0
800	810	870	108	1,0	94	4,5	16,1	2,9	15,0	34,0
1000	1010	1090	124	1,0	158	4,5	19,6	4,4	25,0	49,0
1200	1210	1316	170	1,0/1,2	158	4,5	32,2	4,8	28,0	65,0
1500	1510	1636	180	1,2/1,5	186	4,5	58,7	6,3	42,0	107,0
1800	1810	1962	192,5	1,5	186	5,0	78,6	8,4	59,0	146,0

CERTIFICATES

