

# TECHNICAL DATA SHEET CONCEALED FLUSHING CISTERN FLUENTA

Fluenta

Product Code: 40006356

Product image:

Fluenta concealed flushing cisterns are a perfect choice for furnishing bathrooms and sanitary facilities. An economical and noiseless flushing cisterns will ensure outstanding performance. A rich offer of flushing plates is aesthetically customized to match with the environment according to your wishes.



## INSTALLATION METHOD

- Installation in prefabricated walls, pre-wall installation in dry walls, universal installation into solid walls
- Corner installation

## PROPERTIES

- Powder-coated metal construction, square profile 40 x 40 mm with pre-assembled concealed flushing cistern
- Frontal - dual flushing (3-6 l default, 4,5-9 l optional)
- Adjustable flushing volume (maximum quantity of water 6-9 l, a minimum quantity of water 3-4,5 l)
- Pre-assembled wall brackets and adjustable support legs (0-200 mm)
- Water connection possibility in two positions
- Fully insulated against condensation

## SPECIAL FEATURES

- Silent mechanical filling valve (noise emission class 1 ISO 3822)
- Depth adjustable drain elbow (+/- 10 mm)

## THE PRODUCT CONTAINS

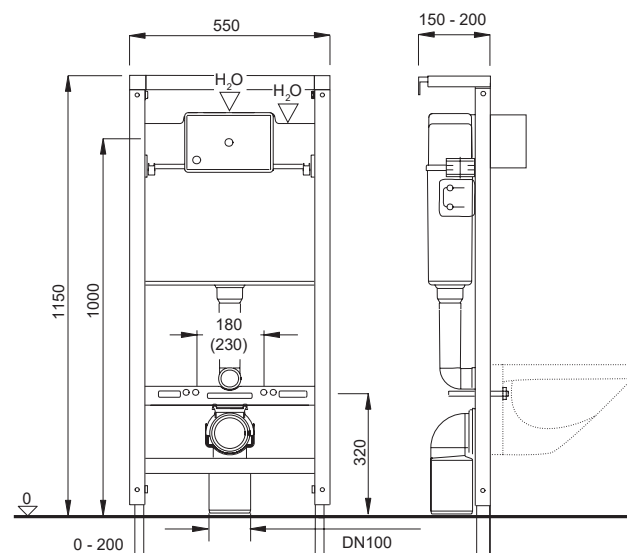
- Concealed flushing cistern with a pre-mounted angle valve
- Water connection 1/2"
- PE wall drain elbow Ø 90/110 mm with a seal
- All parts required for mounting and fixing of the product

## PACKAGING

- Pallet: 24 pcs



Technical draw:



1300 kaplara br. 189  
34301 Bukovik  
Arandjelovac  
Serbia

Headquarters: +381 (0) 34/700-300  
Commercial: +381 (0) 34/700-336  
+381 (0) 34/700-306  
+381 (0) 34/700-338

office@pestan.net  
www.pestan.net

 **PEŠTAN**  
we build trust